

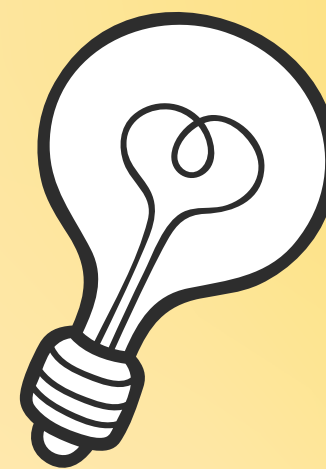


THE BRAIN LAB SCHOOL

PROSPECTUS

BUILDING BRAINS, NOT JUST TEACHING

INTRODUCTION

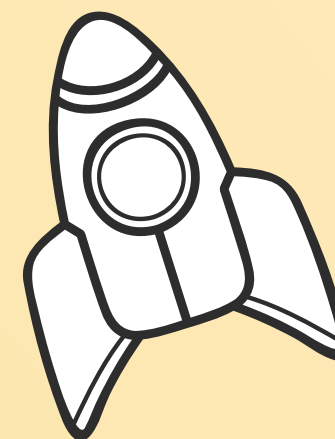


Welcome to Brain Lab School a structured early learning and brain development center dedicated to nurturing young minds during the most critical years of growth.

At Brain Lab School, we believe that early childhood is not just about learning letters and numbers it is about developing the brain, building confidence, and creating a strong foundation for life.

Inspired by **Japanese methodologies** and modern early childhood practices, we provide a nurturing environment where children grow through experience, connection, and structured stimulation.

OUR MISSION



At Brain Lab School, our mission is to nurture each child's unique potential through innovative and thoughtfully designed learning experiences.

We focus on strengthening :

- * *Memory and focus*
- * *Creativity and imagination*
- * *Emotional growth and confidence*

Through hands-on activities, visual and auditory exercises, and right-brain-inspired techniques, we create meaningful learning experiences for every child.

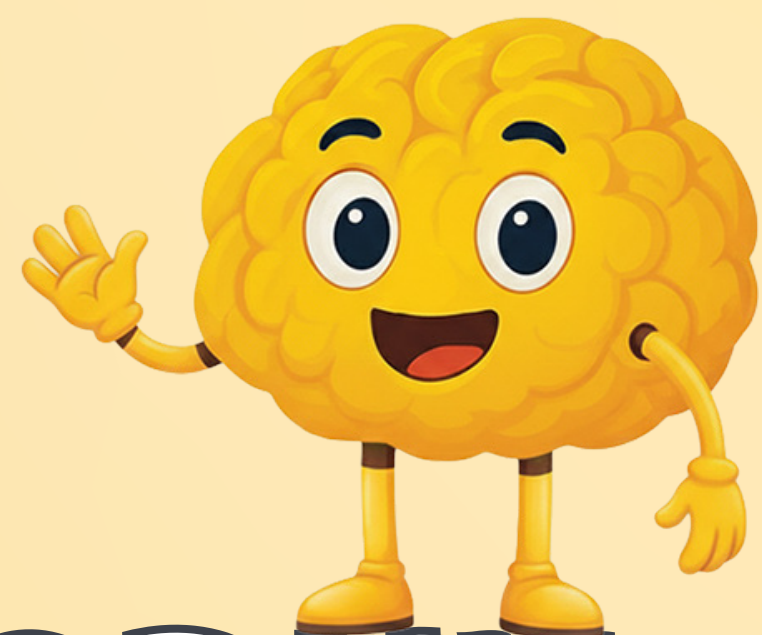
We provide a safe, supportive, and joyful environment where children feel confident to explore, express, and learn.

OUR VISION

Our vision is to become a leading center for early brain development and **holistic learning**, where children grow into confident, curious, and capable individuals.

We aim to :

- * *Encourage a love for learning*
- * *Help children embrace challenges*
- * *Develop emotional and creative intelligence*



OUR PHILOSOPHY

We believe that:

- * *Early years are critical for brain development*
- * *Every child has unique potential*
- * *Learning should be joyful and engaging*
- * *Strong emotional bonding enhances learning*

Our approach focuses on whole brain development, cognitive, emotional, and physical.

OUR CURRICULUM FRAMEWORK

At Brain Lab School, our curriculum is built on **five** core pillars to ensure complete and balanced development:

1. COGNITIVE & RIGHT BRAIN DEVELOPMENT

Enhancing memory, focus, visual learning, and rapid brain stimulation.

2. LANGUAGE & COMMUNICATION SKILLS

Developing phonics, speaking, listening, and vocabulary.

3. SENSORY & MOTOR DEVELOPMENT

Strengthening fine motor skills, coordination, and body control through hands-on activities.

4. EMOTIONAL INTELLIGENCE & SOCIAL SKILLS

Building confidence, empathy, behavior, and social awareness.

5. EXPERIENTIAL & CREATIVE LEARNING

Encouraging imagination, exploration, and real-life learning experiences.

HOW LEARNING HAPPENS DAILY ?

Our structured daily routine ensures holistic brain development through:

Emotional & Communication Circle – confidence, bonding, expression

Right Brain Stimulation – flashcards, memory games, visual tracking.

Foundational Learning – phonics, early math, general knowledge.

Fine Motor Lab – pouring, transferring, hand control activities.

Creative Exploration – art, sensory play, imagination.

Story & Life Skills – values, habits, real-life learning.

Brain & Body Coordination – movement, balance, coordination.



OUR PROGRAMS

INFANCY & TODDLER STAGE

(3 Months – 2 Years)

SUB PROGRAMS

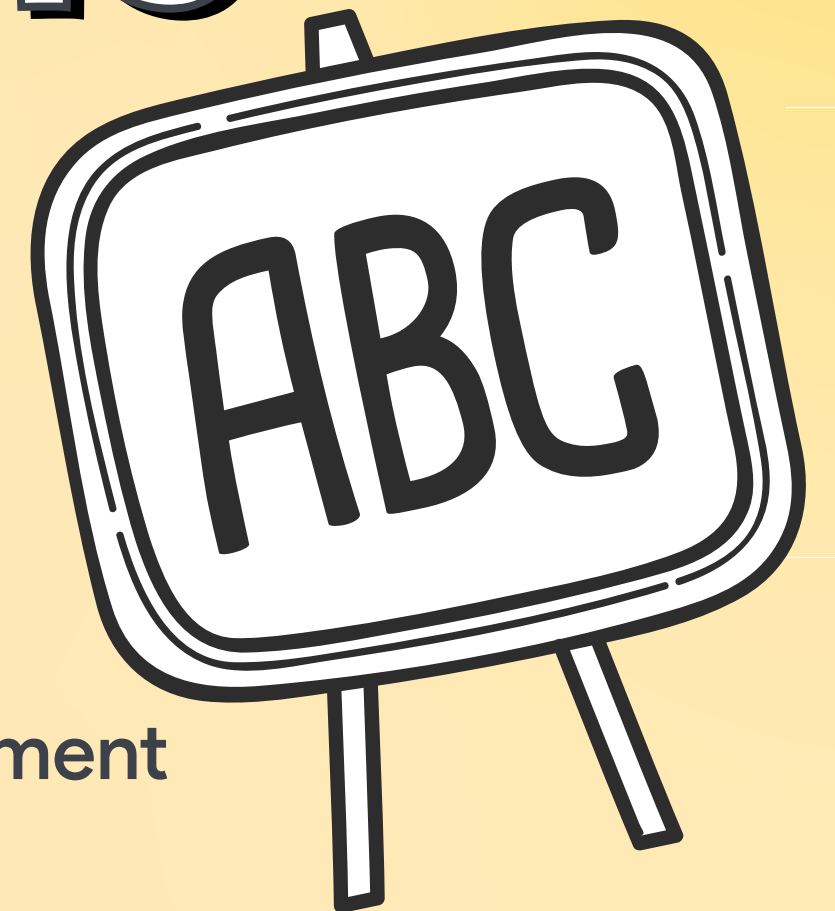
Baby Brain Awakening | Toddler Brain Development

FOCUS

Sensory stimulation, bonding, early brain activation

OUTCOME

Secure attachment and strong sensory foundation



EARLY PRESCHOOL STAGE

(2 – 4 Years)

SUB PROGRAMS

Junior Brain Builders | Curious Brain Builders

FOCUS

Attention, memory, language exposure, exploration

OUTCOME

Improved focus, curiosity, and early cognitive development

PRESCHOOL / KG STAGE

(4 – 6 Years)

SUB PROGRAMS

Smart Brain Builders | Rising Brain Builders

FOCUS

Problem-solving, pre-academic skills, independence

OUTCOME

Confident and school-ready learners

PRIMARY BRAIN BUILDERS

(6 – 8 Years)

SUB PROGRAMS

Brain Lab Level 1 | Brain Lab Level 2

FOCUS

Thinking skills, memory strengthening, communication

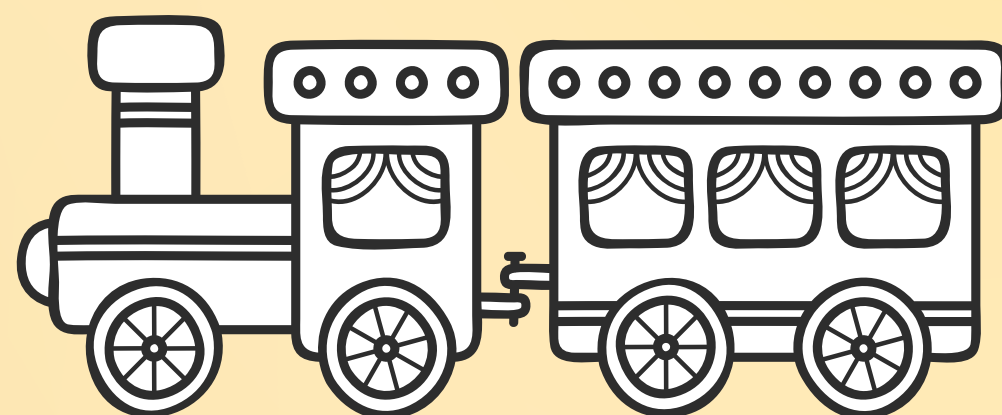
OUTCOME

Strong academic foundation and independent thinking

OUR APPROACH

We use:

- * Multi-sensory learning
- * Hands-on activities
- * Repetition and brain stimulation
- * Movement and music
- * Parent-child interaction



WHAT MAKES US DIFFERENT

- * Only 6 students per class for personal attention
- * Mothers are part of the classroom
- * Inspired by Japanese methodology
- * Focus on brain development, not rote learning
- * Safe, nurturing, and joyful environment



**Admissions
Open!**

LIMITED SEATS.



0334-5264484



OUR PROMISE

We do not believe in unrealistic claims.
We believe in providing the right environment, where every child can naturally grow and thrive.

BRAIN LAB SCHOOL

We don't just teach children we build their brain, confidence, and future.

